

**SUBDIVISION PLAN OF LOT 4, DISTRICT LOT 177,
COMOX DISTRICT, PLAN VIP57343.**

PLAN EPP30357

Pursuant to Section 67 of the Land Title Act.

BCGS 92F.076



The intended plot size of this plan is XXX mm in width by XXX mm in height (X size) when plotted at a scale of 1:1000

LEGEND

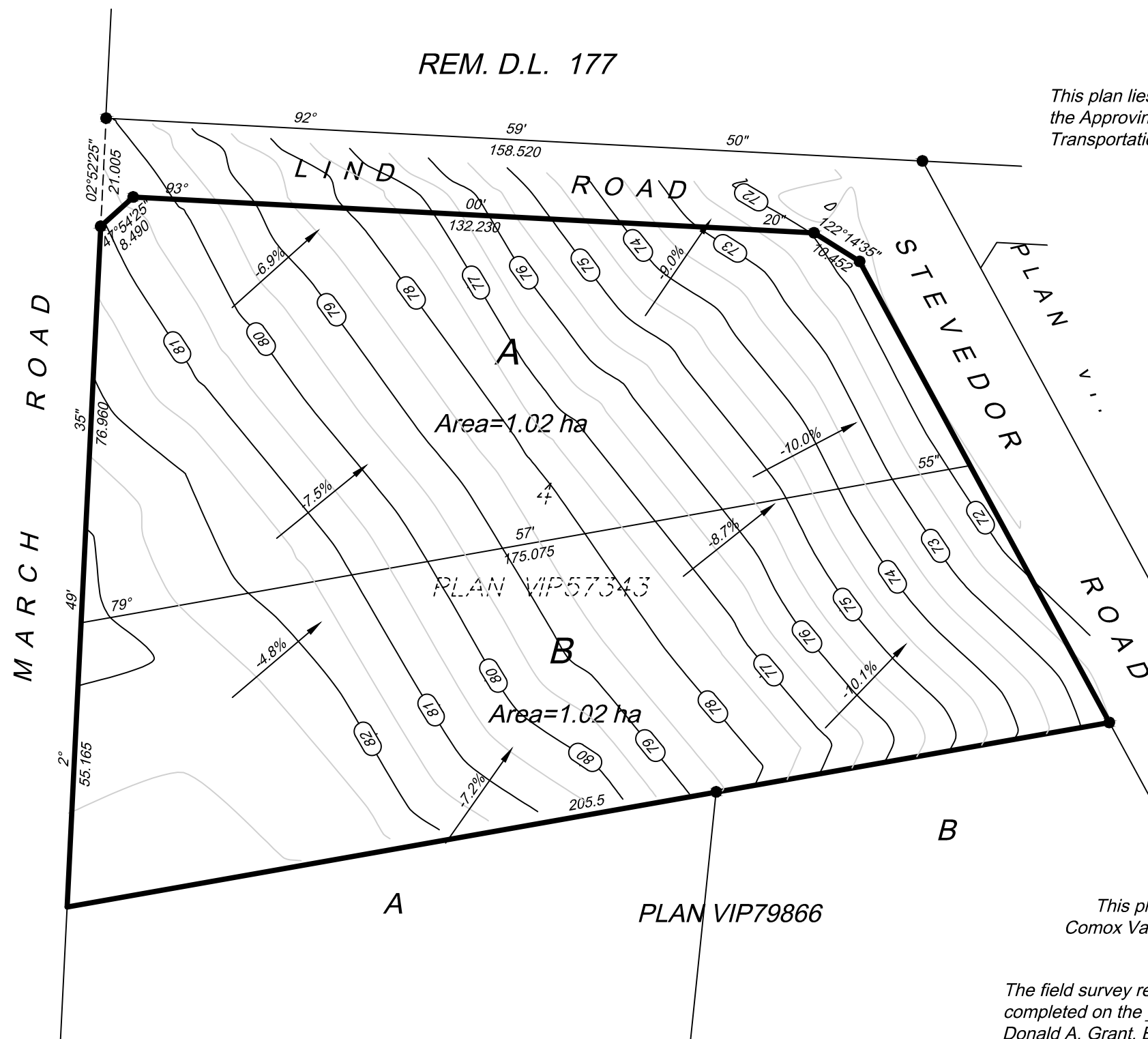
Bearings are NAD83(CSRS) grid bearings, derived from differential carrier phase GPS observations and are referred to the central meridian of Zone 10 (123° West). To obtain local astronomic bearings referred to the meridian through the standard iron post at the Northeast corner of Lot A, Plan EPP30285, subtract 1° 29' 24".

- denotes standard iron post found
- denotes standard iron post placed

This plan shows horizontal ground-level distances, unless otherwise specified. To compute grid distances, multiply ground-level distances by the average combined factor of 0.99983618. The average combined factor has been determined based on an ellipsoidal elevation of 60 metres.

The UTM coordinates and estimated network horizontal accuracy are derived from GPS dual frequency static observations post-processed using the WCDA ACS's at Nanoose, Port Alberni, and Quadra.

This plan lies within the jurisdiction of the Approving Officer for the Ministry of Transportation and Infrastructure.



This plan lies within the Comox Valley Regional District

The field survey represented by this plan was completed on the ___th day of April, 2013
Donald A. Grant, BCLS